

# Holiday/Winter 2013 - 2014 Color 101



Evening Sparkle



Party Mixer



Simple Elegance



Daytime Radiance

*Before*

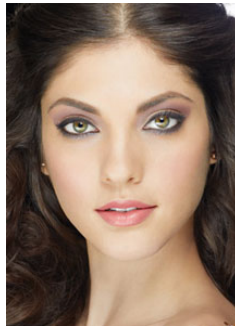
*After*

**3 X 5  
VERTICAL PHOTOS  
WORK BEST**

**3 X 5  
VERTICAL PHOTOS  
WORK BEST**

**The Evening Sparkle Look - \$85**

1. Apply Shimmering Lilac mineral eye color along eye creases and Glistening Gold mineral eye color to browbones. Line upper and lower lashlines with Brilliant Black mineral eye color. Finish with Sparkling White mineral eye color added to inner corners of eyes.
2. Brush on Lash Love® Mascara in I ♥ Black.
3. Apply Strawberry Cream mineral cheek color.
4. Line lips with Soft Blush lip liner.
5. Apply Natural Beauté True Dimensions™ Lipstick..



**MODEL NAME** \_\_\_\_\_

**OCCUPATION** \_\_\_\_\_

**PHONE NUMBER:**

**Home** \_\_\_\_\_

**Work** \_\_\_\_\_

**Cell** \_\_\_\_\_

**BEST TIME TO CALL** \_\_\_\_\_

**Email** \_\_\_\_\_

**HAIR COLOR** \_\_\_\_\_

**EYE COLOR** \_\_\_\_\_

**SKIN TYPE:** combination ~ oily ~ dry

**MY FAVORITE MARY KAY PRODUCTS**

\_\_\_\_\_

\_\_\_\_\_

\_\_\_\_\_

*Before*

*After*

**3 X 5  
VERTICAL PHOTOS  
WORK BEST**

**3 X 5  
VERTICAL PHOTOS  
WORK BEST**

**The Party Mixer Look - \$111**

1. Blend Sweet Cream mineral eye color all over eyelids. Apply Black Pearl mineral eye color along lashlines, blending up into the outer creases. Apply Coastal Blue cream eye color along lower lashlines with an angled brush. Add Dark Denim eyeliner to lashlines.
2. Brush on Ultimate Mascara in Black.
3. Sweep Bronze Diva mineral bronzing powder along cheekbones, using the darker shade under the cheekbones and the lighter shade on top of the cheekbones.
4. Line lips with Caramel lip liner.
5. Apply Natural Beauté True Dimensions Lipstick,



**MODEL NAME** \_\_\_\_\_

**OCCUPATION** \_\_\_\_\_

**PHONE NUMBER:**

**Home** \_\_\_\_\_

**Work** \_\_\_\_\_

**Cell** \_\_\_\_\_

**BEST TIME TO CALL** \_\_\_\_\_

**Email** \_\_\_\_\_

**HAIR COLOR** \_\_\_\_\_

**EYE COLOR** \_\_\_\_\_

**SKIN TYPE:** combination ~ oily ~ dry

**MY FAVORITE MARY KAY PRODUCTS**

\_\_\_\_\_  
\_\_\_\_\_  
\_\_\_\_\_

*Before*

*After*

**3 X 5  
VERTICAL PHOTOS  
WORK BEST**

**3 X 5  
VERTICAL PHOTOS  
WORK BEST**

**The Simple Elegance Look - \$78**

1. Apply Honey Spice mineral eye color all over eyelids. Blend Amber Blaze mineral eye color from lashlines to creases and along lower lashlines. Sweep Coal mineral eye color along lashlines with an angled brush.
2. Brush on Ultimate Mascara™ in Black.
3. Apply Cherry Blossom mineral cheek color along cheekbones.
4. Line lips with Plum lip liner.
5. Finish with Mystic Plum True Dimensions™ Lipstick.



MODEL NAME \_\_\_\_\_

OCCUPATION \_\_\_\_\_

PHONE NUMBER:

Home \_\_\_\_\_

Work \_\_\_\_\_

Cell \_\_\_\_\_

BEST TIME TO CALL \_\_\_\_\_

Email \_\_\_\_\_

HAIR COLOR \_\_\_\_\_

EYE COLOR \_\_\_\_\_

SKIN TYPE: combination ~ oily ~ dry

MY FAVORITE MARY KAY PRODUCTS

\_\_\_\_\_

\_\_\_\_\_

\_\_\_\_\_

*Before*

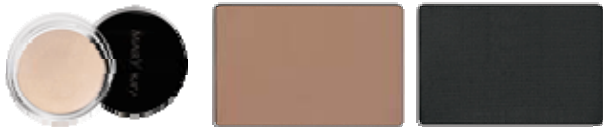
*After*

3 X 5  
VERTICAL PHOTOS  
WORK BEST

3 X 5  
VERTICAL PHOTOS  
WORK BEST

**The Daytime Radiance Look - \$98**

1. Apply Beach Blonde cream eye color all over eyelids. Blend Hazelnut mineral eye color from lashlines to creases and along lower lashlines. Sweep Coal mineral eye color along lashlines with an angled brush and smudge.
2. Brush on Lash Love® Mascara in I ♥ Black.
3. Apply Sheer Bliss cream blush along cheekbones.
4. Line lips with Soft Blush lip liner.
5. Apply Sweet Nectar creme lipstick. Finish with Au Naturel lip gloss.



MODEL NAME \_\_\_\_\_

OCCUPATION \_\_\_\_\_

PHONE NUMBER:

Home \_\_\_\_\_

Work \_\_\_\_\_

Cell \_\_\_\_\_

BEST TIME TO CALL \_\_\_\_\_

Email \_\_\_\_\_

HAIR COLOR \_\_\_\_\_

EYE COLOR \_\_\_\_\_

SKIN TYPE: combination ~ oily ~ dry

MY FAVORITE MARY KAY PRODUCTS

---



---



---

# COLOR 101 PORTFOLIO - INFORMATION SHEET

	Consultant Name	Phone	Email	Appt. Date	Color Preferences
1					
2					
3					
4					
5					
6					
7					
8					
9					
10					
11					
12					
13					
14					
15					
16					
17					
18					
19					
20					
22					
22					
23					
24					
25					